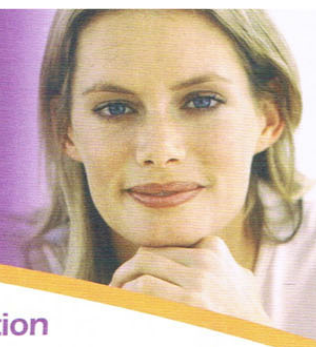


Once-daily CRINONE: Proven Progesterone Support That's Easy and Comfortable



Developed for women undergoing assisted reproductive technologies (ART)

- First progesterone approved for use during ART by the US Food and Drug Administration
- Proven effective in numerous studies over 10 years

Designed to put progesterone right where you need it

- Made of a unique bioadhesive gel that coats and adheres to the vaginal walls after application
 - No other progesterone offers this distinct, patient-friendly delivery method
- Progesterone in CRINONE travels directly to the uterus—where it is needed
- Small, white globules may appear as a vaginal discharge possibly due to gel accumulation, even several days after usage. It is not unusual. If you are concerned, discuss this with your doctor

Once-daily CRINONE can fit easily into your morning routine

- One quick dose each morning makes it easy for you to get up, use your CRINONE, and get on with your day

Spotting and/or bleeding

- Similar to other progesterones, spotting and/or bleeding is possible with CRINONE
- If you become concerned, speak to your doctor

CRINONE 8% (progesterone gel) is indicated for progesterone supplementation or replacement as part of an Assisted Reproductive Technology (ART) treatment for infertile women with progesterone deficiency.

Important Safety Information

The most common side effects of CRINONE (progesterone gel) 8% include breast enlargement, constipation, drowsiness, nausea, headache, and pain in the pubic area. You should not use CRINONE 8% if you have any disorders involving blockage of your blood vessels, or a history of these disorders, miscarriages, vaginal bleeding that hasn't been diagnosed, liver problems or disease, or known or possible cancer of the breast or genital organs. You should discontinue use of CRINONE 8% if any symptoms occur that signal a blockage of your blood vessels. There is no evidence that CRINONE 8% will work in preventing miscarriage. Your doctor should examine your breasts and pelvic organs, as well as perform a Pap smear prior to prescribing CRINONE 8%. If you have vaginal bleeding during treatment with CRINONE 8%, your doctor should look for the cause. If you have conditions that cause fluid retention, a history of depression, or diabetes, your doctor should provide special attention to your care while you are using CRINONE 8%.

Please see the patient product information.

www.crinoneusa.com

Toll-free support line: 1-800-PRO-GEL8 (1-800-776-4358)



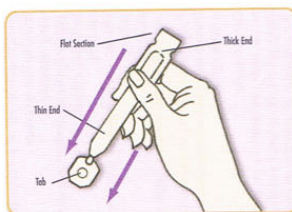
© 2010, Watson Pharmaceuticals, Inc.

Printed in USA

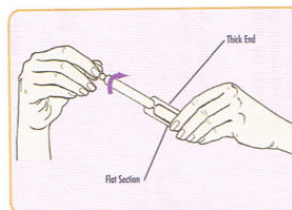
06737

Familiar, comfortable application

CRINONE comes in a slim, rounded vaginal applicator that is similar to a tampon applicator. So, applying CRINONE is familiar and comfortable. Some gel will be left over in the applicator after use. You will have received the progesterone dose you need.



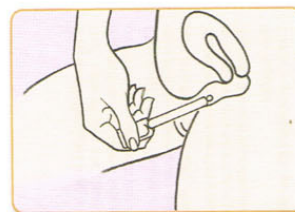
- Remove the applicator from the sealed wrapper
- Hold the applicator by the thick end
- Shake down several times like a thermometer to ensure that the contents are at the thin end



- Hold the applicator by the flat section of the thick end
- Twist off and throw away the tab at the thin end
- DO NOT squeeze the thick end while twisting the tab. This could force some gel to be released before it is inserted into the vagina



- The applicator may be inserted into your vagina while you are in a sitting position or when lying on your back with your knees bent
- Gently insert the thin end well into your vagina



- Squeeze the thick end of the applicator to deposit CRINONE
- Remove the applicator and throw it away in a waste container

For use at altitudes above 2500 feet, see special instructions on the other side of this page.

Crinone
progesterone gel 8%